

SUB70 RANGE

DANDALL S30



DANDALL S30:

STUDIO - 30m²

Beautifully simple yet cleverly designed, the Dandall makes compact living feel open and effortless. A striking gable ceiling and wide sliding doors flood the space with natural light, creating a bright and airy interior.

The versatile studio-style layout provides all the essentials within a smart 30m² footprint, ideal as a guest accommodation, backyard studio, or modern tiny home retreat. The Dandall blends contemporary design with practical small-home living.

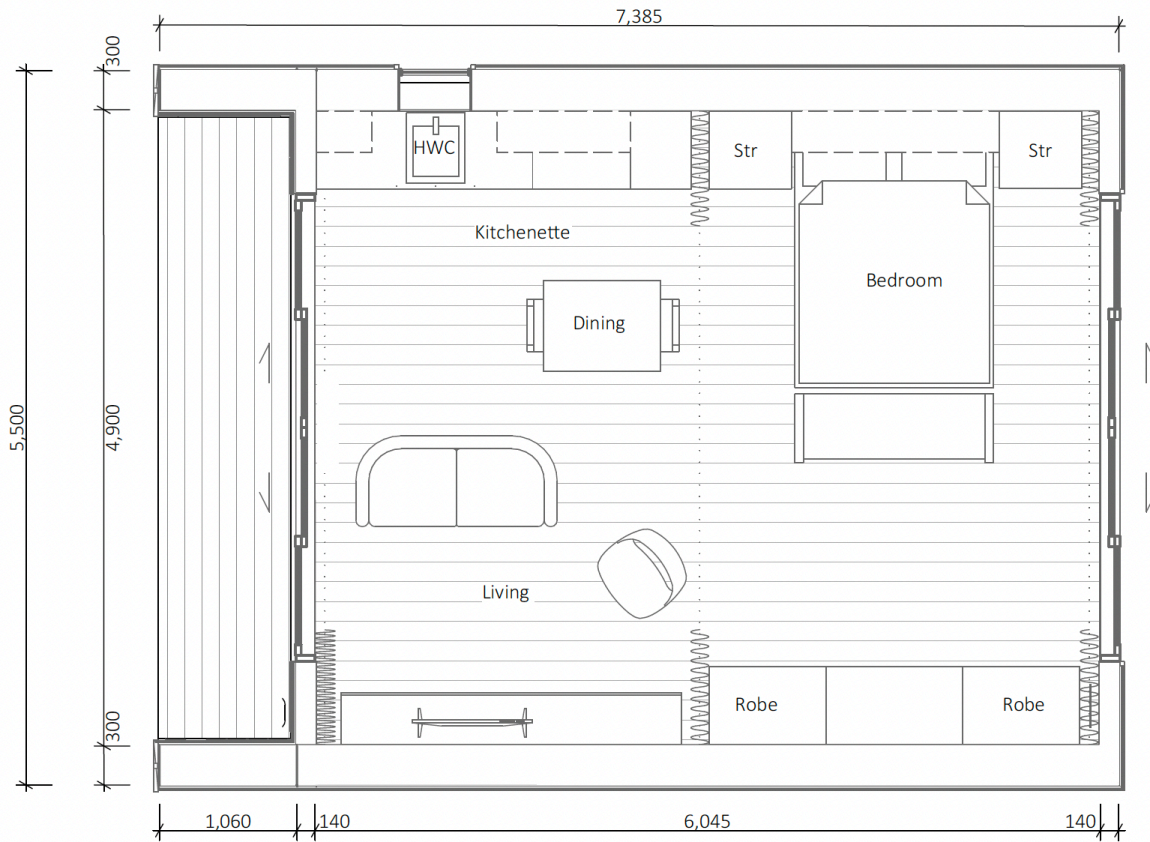
Note: The photo above is an artist's impression.

Please refer to or contact us for specifications detailing standard inclusions and available upgrades.

FEATURES:

- 29.6m² house floor area.
- 40.6m² total area over frames.
- Open-plan studio with Truss design.
- Compact kitchenette (connection to plumbing services optional).
- Raked gable ceiling add to height and spaciousness.
- Large sliding door brings in natural light.
- Large 5.83m² deck over frames for outdoor living
- Truss House™ Technology

DANDALL S30



The floor plan is currently with Clever Living Co. architects to add an en-suite.

