

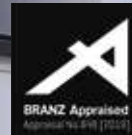
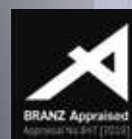
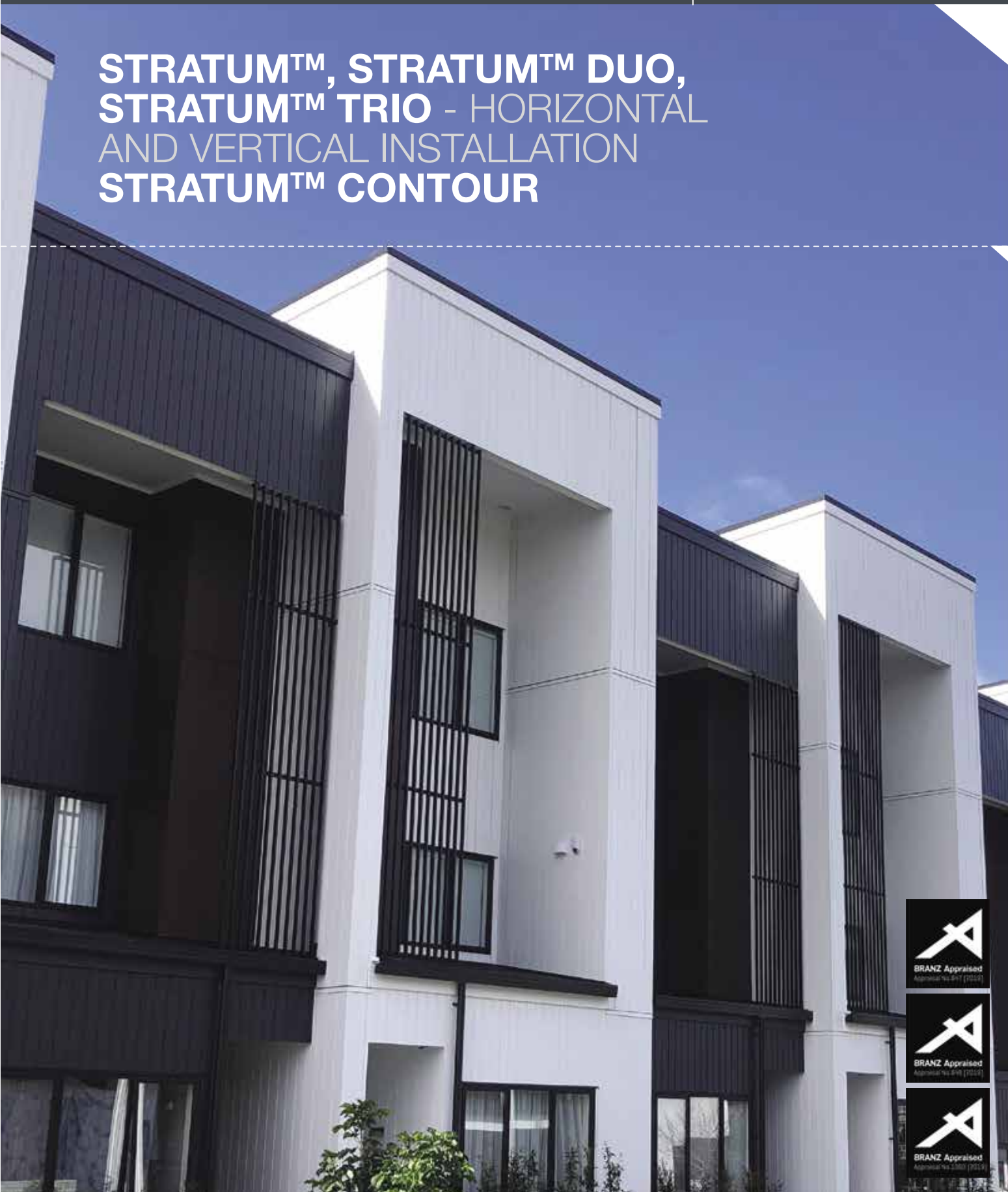


Fibre Cement

BGCINNOVADESIGN.CO.NZ



STRATUM™, STRATUM™ DUO, STRATUM™ TRIO - HORIZONTAL AND VERTICAL INSTALLATION STRATUM™ CONTOUR



INTRODUCING INNOVA™

INNOVA™ IS A RANGE OF FACADE AND FLOORING PRODUCTS WHICH GIVE A NEW DIMENSION TO THE BGC PRODUCT RANGE. THE PRODUCTS WITHIN THE INNOVA RANGE HAVE BEEN DESIGNED TO INSPIRE YOU TO CREATE A NEW INNOVATIVE AND DYNAMIC FACADE OR FLOORING SYSTEM.

STRATUM™, STRATUM™ DUO AND STRATUM™ TRIO ARE AN INNOVATIVE PLANK RANGE THAT CAN BE USED INDIVIDUALLY OR MIXED TOGETHER TO CREATE A STRIKING EXTERIOR CLADDING SOLUTION.

THE 3 PROFILES IN THE STRATUM™ RANGE AND STRATUM™ CONTOUR PROVIDE A MODERN ALTERNATIVE TO TRADITIONAL WEATHERBOARDS.

STRATUM™ IS A 300MM WIDE PLANK WITH A 16MM HORIZONTAL JOINT.

STRATUM™ DUO IS A 300MM WIDE PLANK BUT FEATURES A 16MM WIDE GROOVE IN THE CENTRE OF THE PLANK GIVING THE APPEARANCE OF 2 THINNER PLANKS.

STRATUM TRIO IS AGAIN A 300MM WIDE PLANK BUT FEATURES 2 X 16MM WIDE GROOVES GIVING THE APPEARANCE OF 3 THINNER PLANKS.

STRATUM™ CONTOUR IS A THINNER PLANK BUT FEATURES A 2MM DEEP SHADOWLINE AT THE TOP OF EACH PLANK.

STRATUM™ CLADDING SYSTEM

- / AVAILABLE IN 3 STRIKING PROFILES:
 - STRATUM™ (300MM)
 - STRATUM™ DUO (300MM)
 - STRATUM™ TRIO (300MM)
 - STRATUM™ CONTOUR (170MM)
- / FEATURES AN EASY SHIPLAP JOINING METHOD
- / STRATUM™, STRATUM™ DUO AND STRATUM™ TRIO CAN BE INSTALLED BOTH HORIZONTALLY AND VERTICALLY
- / FACTORY SEALED, AND PRIMED READY FOR PAINTING
- / QUICK AND EASY TO INSTALL
 - STRATUM™, STRATUM™ DUO AND STRATUM™ TRIO – ADHESIVE AND BRADS
 - STRATUM™ CONTOUR – MANUAL OR GUN NAILING
- / BRANZ APPRAISED

CONTENTS

PRODUCT DESCRIPTION	/ 5
ADVANTAGES	/ 5
CONTROL OF EXTERNAL FIRE SPREAD	/ 5
PREVENTION OF FIRE OCCURING	/ 5
PLANK SIZES AND MASS	/ 5
THERMAL CONDUCTIVITY	/ 6
DESIGN CONSIDERATIONS	/ 6
ENERGY EFFICIENCY CONSIDERATIONS	/ 6
WEATHER RESISTANCE/FREEZE THAW	/ 6
CUTTING AND DRILLING	/ 6
HANDLING AND STORAGE	/ 6
ACCESSORIES AVAILABLE FROM BGC	/ 7
ACCESSORIES SUPPLIED BY BUILDING MERCHANT	/ 8
FASTENERS	/ 9
PLANK COVERAGE	/ 9
FRAMING	/ 10
CAVITY CONSTRUCTION	/ 10
FIXING TO BATTENS	/ 10
INSTALLATION DETAILS	/ 11-20
MOISTURE MANAGEMENT	/ 25
FINISHING	/ 25
MAINTENANCE	/ 25
WARRANTY	/ 26

PRODUCT DESCRIPTION

Stratum™ features a shiplap horizontal joining system making it quick and simple to achieve a classic yet contemporary look. With 4 different profiles available, there is sure to be a profile to suit any project.

Stratum™ can be used for exterior cladding on low to medium rise buildings or for a different twist, can be used to create a stunning interior feature wall.

Stratum™ is not subject to timber rot, decay, cracking or twisting and will not support combustion. The result is a safer, more durable cladding that requires minimal maintenance.

ADVANTAGES

- / Shiplap joining system makes Stratum™ planks quick and simple to install
- / Quick and easy to cut, handle and install
- / Acrylic sealed and primed, ready for painting
- / Durable and low maintenance
- / Stratum™, Stratum™ Duo and Stratum™ Trio is available in Smooth and Woodgrain face finish

DURABILITY

Stratum's™ physical properties make it a very durable product.

- / Stratum™ is immune to permanent water damage in both short and long-term exposure.
- / Stratum™ will not rot or burn and is unaffected by air, steam, salt and sunlight.
- / Stratum™ is not adversely affected over a temperature range of 0°C to 95°C.

PRODUCT INFORMATION

Stratum™ is manufactured from Portland cement, finely ground silica, cellulose fibres and water. Planks are cured in a high-pressure steam autoclave to create a durable, dimensionally stable product.

Stratum™ is manufactured to the Australian/New Zealand Standard AS/NZS 2908.2-2000 Cellulose-Cement Products, Part 2: Flat sheets and Stratum™ is classified as Type A-Category 2.

CONTROL OF EXTERNAL FIRE SPREAD

Stratum™, Stratum™ Duo, Stratum™ Trio and Stratum™ Contour Cavity cladding systems have a peak heat release rate of less than 100kW/m² and a total heat released of less than 25 MJ/m². In accordance with NZBC Acceptable Solution C/AS1 Table 5.1 the system is suitable for use on buildings with a SH Risk Group classification, at any distance to the relevant boundary. Refer to NZBC Acceptable Solutions C/AS2 Paragraph 5.8.1 for the specific exterior surface finishes requirements for other building Risk Groups.

PLANK TOLERANCES

- / Width +0/-1mm
- / Length +0/-2mm
- / Thickness +10%/-0%
- / Diagonals difference (max) 2mm
- / Edge straightness deviation (max) 1mm

PREVENTION OF FIRE OCCURRING

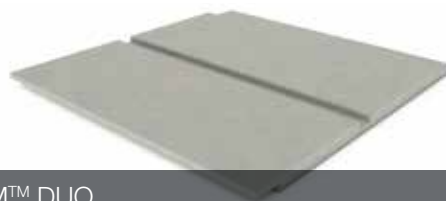
Separation or protection must be provided to Stratum™, Stratum™ Duo, Stratum™ Trio and Stratum™ Contour Cavity Cladding Systems from heat sources such as fire places, heating appliances, flues and chimneys. Part 7 of NZBC Acceptable Solutions C/AS1-C/AS2 and NZBC Verification method C/VM1 provide methods for separation and protection of combustible materials from heat sources.

PLANK SIZES AND MASS-TABLE 1

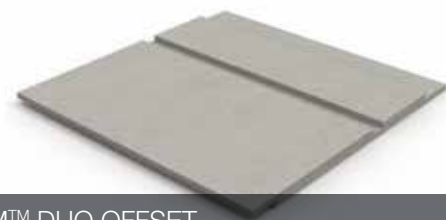
THICKNESS mm	WEIGHT kg/lm	WIDTH mm	PROFILE	LENGTH mm	
				4200	2700
12	5.2	300	Stratum™	x	x
			Stratum™ Woodgrain	x	x
			Stratum™ Duo	x	x
			Stratum™ Duo Woodgrain	x	x
			Stratum™ Trio	x	x
10	2.5	170	Stratum™ Trio Woodgrain	x	x
			Stratum™ Contour	x	



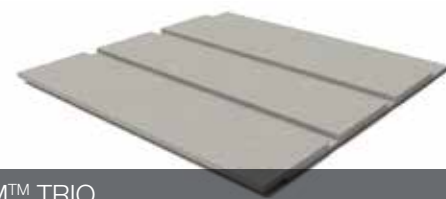
STRATUM™



STRATUM™ DUO



STRATUM™ DUO OFFSET



STRATUM™ TRIO



STRATUM™ CONTOUR

Stratum™, Stratum™ Duo and Stratum™ Trio are available in Smooth and Woodgrain face finish in all sizes.

THERMAL CONDUCTIVITY

Stratum™ planks have relatively low thermal conductivity. At Equilibrium Moisture content the approximate thermal conductivity of Stratum™ is; - 0.25 W/m°C.

ARCHITECTURAL DETAILS

Full architectural details are available from the BGC Fibre Cement NZ website - www.bgcinnovadesign.co.nz or on Productspec and full specification is available on Smartspec.

DESIGN CONSIDERATIONS

The designer should determine the wind pressures for the project and design accordingly. Stratum™ can be situated in specific design wind pressures up to a maximum design differential ultimate limit state (ULS) of 2.5kPa.

The timber structure should be designed to NZS3604. Alternatively the building can be to a specific design using NZS3603 and AS/NZS1170, and the framing must be of at least equivalent stiffness to the framing provisions of NZS3604.

In areas where there is a probability of high wind loading, care should be taken in the design detailing, especially around all opening, corners and other junctions to ensure the weather resistance of the total system.

Before Stratum™ is installed, particular care should be taken to ensure that all flashings and waterproofing work is complete, including all wall underlay or BGC Durabarrier. If Stratum™ is installed onto an unlined wall i.e. gable end or garage walls then a rigid sheathing/air barrier must be installed – i.e. BGC Durabarrier.

For construction, within the scope of E2/AS1, it is a requirement to have a horizontal flashing joint at the floor joist level between storeys and for construction greater than two storeys or 7 metres, an inter-storey flashing bridging the drained cavity must be installed.

ENERGY EFFICIENCY CONSIDERATIONS

Energy Efficiency requirements for both residential and commercial buildings are a requirement under clause H1 of the New Zealand Building Code (NZBC). Thermal heat transfer into and out of the building envelope will affect the running cost of the building and careful consideration of thermal heat transfer needs to be addressed by the architects, engineers and building designers. Thermal bridging through steel framing will diminish the total R-Value (thermal resistance) of the wall. Thermal breaks are required for steel framed buildings and should be installed between the steel framing and the Stratum™ planks. Thermal breaks should have a minimum R-Value of 0.2. Guidance on insulation requirements can be found in the latest edition of BRANZ publication – 'House Insulation Guide'.

WEATHER RESISTANCE/FREEZE THAW

The Stratum™ system has been successfully tested for weather resistance as per NZBC Verification Method E2/VM1.

Stratum™ should not be used in situations where it will be in direct contact with snow and ice for prolonged periods.

CUTTING AND DRILLING

Stratum™ may be cut to size on site. If using power tools for cutting, drilling or sanding they must be fitted with appropriate dust collection devices or alternatively an approved (P1 or P2) dust mask and safety glasses shall be worn. It is recommended that work always be carried out in a well ventilated location.

The most suitable cutting methods are:

- / **DURABLADE**
180mm Diameter.
This unique cutting blade is ideal for cutting Fibre Cement. It can be fitted to a 185mm circular saw, ie Makita or similar. Please ensure safe working practices when using.



- / **NOTCHING**
Notches can be made by cutting the two sides of the notch. Score along the back edge then snap upwards to remove the notch.

- / **DRILLING**
Use normal high-speed masonry drill bits. Do not use the drill's hammer function. For small round holes, the use of a hole-saw is recommended. For small rectangular or circular penetrations, drill a series of small holes around the perimeter of the cut out. Tap out the waste piece from the sheet face while supporting the underside of the opening to avoid damage. Clean rough edges with a rasp.

Large rectangular openings are formed by deeply scoring the perimeter of the opening. Next, form a hole in the centre of the opening (refer method above) then saw cut from the hole to the corners of the opening. Snap out the four triangular segments. Clean rough edges with a rasp.

HANDLING AND STORAGE

Stratum™ must be stacked flat, up off the ground and supported on equally spaced (max 400mm) level gluts. Care should be taken to avoid damage to the ends, edges and surfaces.

Planks must be kept dry. When stored outdoors it must be protected from the weather. Planks must be dry prior to fixing, jointing or finishing.

ACCESSORIES AVAILABLE FROM BGC - TABLE 2

INTERNAL ALUMINIUM CORNER FOR STRATUM™, STRATUM™ DUO, STRATUM™ TRIO & STRATUM™ CONTOUR	3000mm x 17mm	
EXTERNAL ALUMINIUM CORNER FOR STRATUM™, STRATUM™ DUO, STRATUM™ TRIO & STRATUM™ CONTOUR	3000mm x 17mm	
INTERNAL AND EXTERNAL SNAP ON CORNERS	3000mm	
STRATUM™ VERTICAL JOINER	3000mm	
"J" JAMB FLASHING	STRATUM™, STRATUM™ DUO, STRATUM™ TRIO - 2400mm STRATUM™ CONTOUR - 2400mm	
CAVITY VENT STRIP - STRATUM™	19mm x 2700mm	
BGC STRATUM™ CONTOUR CLOSER	33mm x 2700mm	
BGC EDGE SEALER		
PRECUT SCRIBERS FOR STRATUM™, STRATUM™ DUO, STRATUM™ TRIO & STRATUM™ CONTOUR	40 x 18 x 5400mm	STRATUM™ DUO SCRIBER SHOWN 
BGC HORIZONTAL BATTEN	45 x 20mm x 2700mm	

ACCESSORIES SUPPLIED BY BUILDING MERCHANT - TABLE 3

STRUCTURAL CAVITY TIMBER BATTEN H3.1 SG8	20 x 50mm 20 x 70mm (for expressed joints in Stratum™ and Stratum™ Duo).	
SEALANT / ADHESIVE	Bostik Seal 'n' Flex FC	
SEALANT	Bostik Safetech Safe Seal or any BRANZ Appraised paintable sealant	

FASTENERS

STRATUM™ CONTOUR CAVITY CONSTRUCTION

CONCEALED FIXING

40 x 2.8mm Fibre Cement Nail - Galvanised or Stainless Steel



STRATUM™ CAVITY CONSTRUCTION HORIZONTAL INSTALLATION



Paslode C30 x 1.6mm Stainless Steel Brad

STRATUM™ PLANK COVERAGE - TABLE 4

NO. OF PLANKS	STRATUM™ STRATUM™ DUO AND STRATUM™ TRIO	STRATUM™ CONTOUR
	PLANK SIZE 4200 x 300 x 12mm	PLANK SIZE 4200 x 170 x 10mm
	PLANK OVERLAP 24mm	PLANK OVERLAP 29mm
	EFFECTIVE COVER PER PLANK 4200 x 276mm OR 1.159m ²	EFFECTIVE COVER PER PLANK 4200 x 141mm OR 0.592m ²
1	300	170
2	576	311
3	852	452
4	1128	593
5	1404	734
6	1680	875
7	1956	1016
8	2232	1157
9	2508	1298
10	2784	1439
11	3060	1580
12	3336	1721
13	3612	1862
14	3888	2003
15	4164	2144
16	4440	2285
17	4716	2426
18	4992	2567
19	5268	2708
20	5544	2849

Table 4 is provided to assist in calculating the number of planks required to cover a given wall height.

For triangular areas such as Gable ends, halve the quantities derived for a rectangular wall then add 10% to cover off cuts.

STRATUM™ CAVITY CONSTRUCTION VERTICAL INSTALLATION

NAIL OPTION



65 x 2.87mm Rounddrive ring shank nail

Refer to BGC Technical Specification – Steel framing – for fixings when using steel framing.

Fixings must comply with the minimum durability requirements of NZBC.

BRAD AND ADHESIVE OPTION



Paslode C30 x 1.6mm Stainless Steel Brad and Bostick Seal 'n' Flex FC.

FRAMING

Stratum™, Stratum™ Duo and Stratum™ Trio are designed to be installed both horizontally and vertically, Stratum™ Contour is designed to be installed horizontally to both timber and light-weight steel frames.

Ensure that the frame is square and work from a central datum line. The frame must be straight and true to provide a flush face to receive the panels.

BGC suggest a maximum tolerance of 3mm-4mm in any 3000mm length of frame.

Stratum™ will not straighten excessively warped or distorted frames and any warping may still be visible after Stratum™ planks are applied. Warped framing will require remedial action.

TIMBER FRAMING

Timber wall framing behind Stratum™ must be treated and have moisture contents as required by NZBC Acceptable Solution B2/AS1.

Timber framing must comply with all current NZ Standards and any specific engineering design specifications.

Stratum™ requires a minimum framing width of 45mm. Studs spacing must not be greater than 600mm centres. Nog/dwang spacing must not be greater than 800mm centres. Stratum™ vertical nog/dwang must not be greater than 600mm.

Timber framing must have a maximum moisture content of 20% at the time of installation of Durabarrier or wall underlay.

CAVITY CONSTRUCTION

Stratum™ and Stratum™ Contour has been appraised to be installed on Cavity Construction only and can be used as a wall cladding system in all NZS304:2011 wind zones and situated in specific design wind pressures up to a maximum design differential ultimate limit state (ULS) of 2.5kPa.

Stratum™ Horizontal Installation - Nominal 50 x 25mm battens, SG8 framing grade pinus radiata, treated to H3.1 and must be installed on to studs.

Vertically installed cavity battens must be structurally fixed with 65 x 2.87mm Roundrive Ring Shank Nails or 60 x 2.8mm Jolt Head Galvanised Nails. They must be fixed at maximum 300mm centres with fixings offset 12mm each side of the centre line.

Stratum™ Vertical Installation - BGC Horizontal Batten - 45 x 20mm castellated batten - SG8 framing grade Pinus radiata, treated to H3.1 and installed on the studs and dwangs/nogs.

BGC Horizontal Batten must be fixed with 65 x 2.87mm Roundrive Ring Shank Nails or 60 x 2.8mm Jolt Head Nails at maximum 600mm centres or 300mm centres with fixings offset 12mm from the centre line for Brad and Adhesive fixing option.

Where studs are greater than 450mm centres and a wall underlay is used, a wall underlay support must be installed horizontally over the underlay at maximum 300mm centres. Horizontally installed vertical plank joints must coincide with the centre line of the cavity battens. Stud centres may have to be designed to coincide with the plank joints.

FIXING STRATUM™ AND STRATUM™ CONTOUR TO BATTENS

STRATUM™ HORIZONTAL INSTALLATION

Stratum™ must be fixed to the cavity batten with a continuous 6mm bead of Bostik Seal 'n' Flex FC to all contact surfaces. The intermediate batten must have 1 x 6mm beads of Seal 'n' Flex FC.

FIXING

C30 304 Stainless Steel Brad – Apply one Brad to the concealed lap section and one brad to the face of Stratum™ approximately 50mm from the bottom of the plank. The Brads must be used in conjunction with Bostik Seal 'n' Flex FC.

A small bead of sealant must be applied to the lap section at the ends of each plank.

STRATUM™ VERTICAL INSTALLATION - NAIL OPTION

65 x 2.87mm Roundrive ring shank nails - apply one nail to the concealed lap section and one nail to the face of Stratum™ approx. 3/4 of the width of the plank from the lap nail. A small bead of Bostik Seal 'n' Flex FC must be run down the vertical lap prior to the next board being installed.

STRATUM™ VERTICAL INSTALLATION - BRAD AND ADHESIVE OPTION

Stratum™ Vertical can be fixed to the BGC Horizontal Batten with a 6mm bead of Bostik Seal 'n' Flex FC to all contact surfaces.

FIXING

C30 304 Stainless Brad - apply one Brad to the conceal lap section and one brad to the face of the plank approximately 50mm from the top lap side of the plank.

A small bead of Bostik Seal 'n' Flex must be run down the vertical lap prior to the next board being installed

This option is not shown in the Installation details on the following pages - please contact BGC for details or on bgcinnovadesign.co.nz

Note: Bostik Seal 'n' Flex FC must only be applied just prior to the installation of Stratum™ Planks as it is a fast cure adhesive.

Stratum™ Planks and cavity battens must be dry and free from dust prior to the application of Bostik Seal 'n' Flex FC. The adhesive must not be applied in temperatures below 5°.

CONSTRUCTION DETAILS

FIXING STRATUM™ AND STRATUM™ CONTOUR TO BATTENS

STRATUM™ CONTOUR

FIXING

Stratum™ Contour is concealed fixed with a 40 x 2.8mm Fibre Cement Nail on every stud.

Stratum™ Contour can be joined either on stud or off stud. Off Stud joints must not be closer than 100mm to the edge of the stud and must be staggered by 600mm minimum from the joints in previous courses. A bead of Bostik Seal 'n' Flex must be applied to the end of the plank before the corresponding plank is inserted.

A continuous cant strip or profiled packed is required behind the first course of Stratum™ Contour.

The bottom course of Stratum™ Contour must be face fixed to the cavity battens with a 50 x 2.8mm Flat Head Nail 75mm from the bottom of the plank. Pre drilling for the 50 x 2.8mm Nail is recommended. Each subsequent plank is installed with a 40 x 2.8mm Flat Head Nail in the lap. The nails must be positioned a minimum of 10mm from the plank ends.

It is important that the first course is installed level as it provides a base for all subsequent courses.

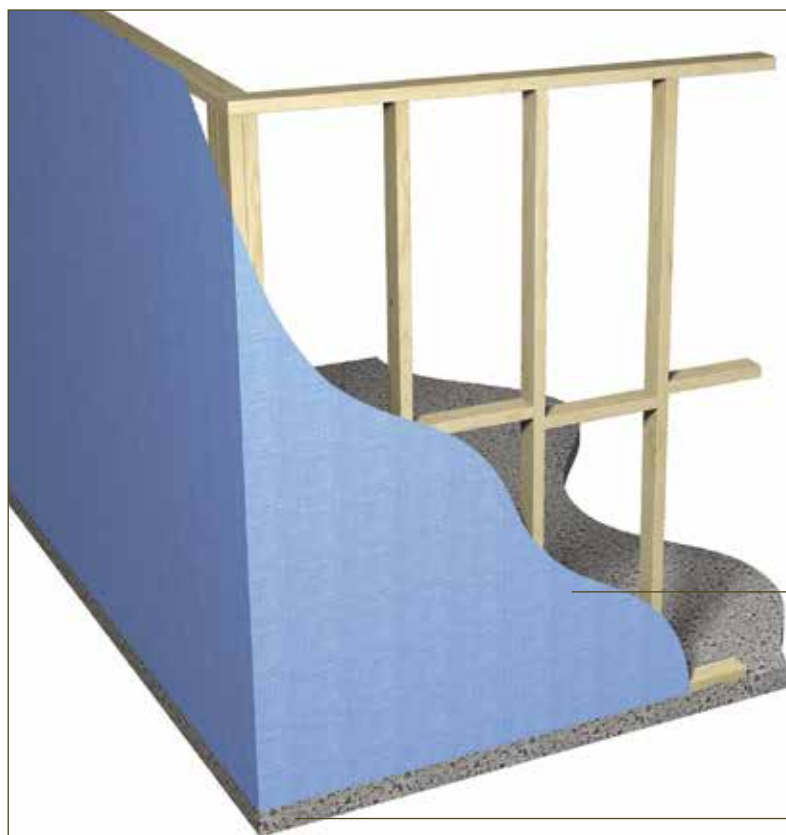
INSTALLATION DETAILS

The detailed diagrams following are intended to assist the designer in achieving a high quality weather resistant Stratum™ installation.

A full range of architectural details are available on bgcinnovadesign.co.nz or from BGC Fibre Cement (NZ).

INSTALLATION DETAILS

FIGURE 1
CONSTRUCT FRAME



Wall Underlay

Ensure required ground
clearance provided

INSTALLATION DETAILS

FIGURE 2
STRATUM™, STRATUM™ DUO, STRATUM™ TRIO –
HORIZONTAL INSTALLATION – SLAB DETAIL

6mm bead of Bostik Seal 'n' Flex

Wall Underlay

30 x 1.6mm C Series Stainless Steel Brad

Cavity Batten

Stratum™

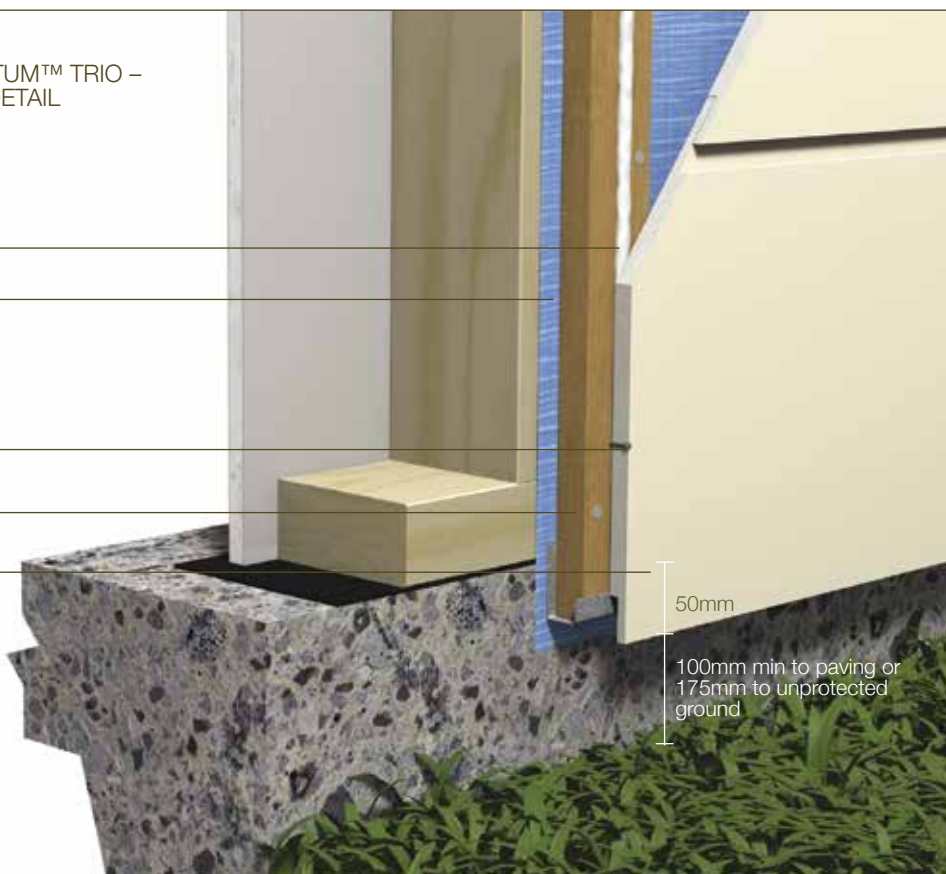


FIGURE 3
STRATUM™, STRATUM™ DUO, STRATUM™ TRIO –
VERTICAL INSTALLATION – SLAB DETAIL

Stratum™

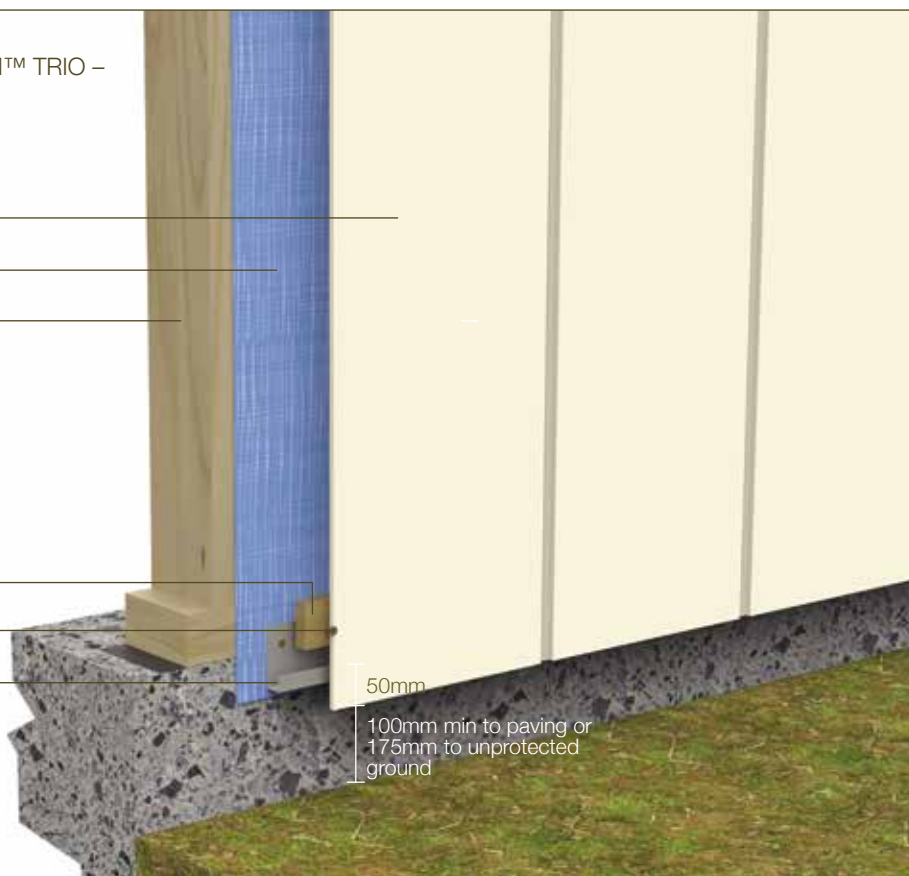
Wall Underlay

Timber Frame

Cavity Batten

65 x 2.87mm Rounddrive ringshank nail

Vent Strip



INSTALLATION DETAILS

FIGURE 4
STRATUM™, STRATUM™ DUO, STRATUM™ TRIO –
HORIZONTAL INSTALLATION – ON STUD JOINING

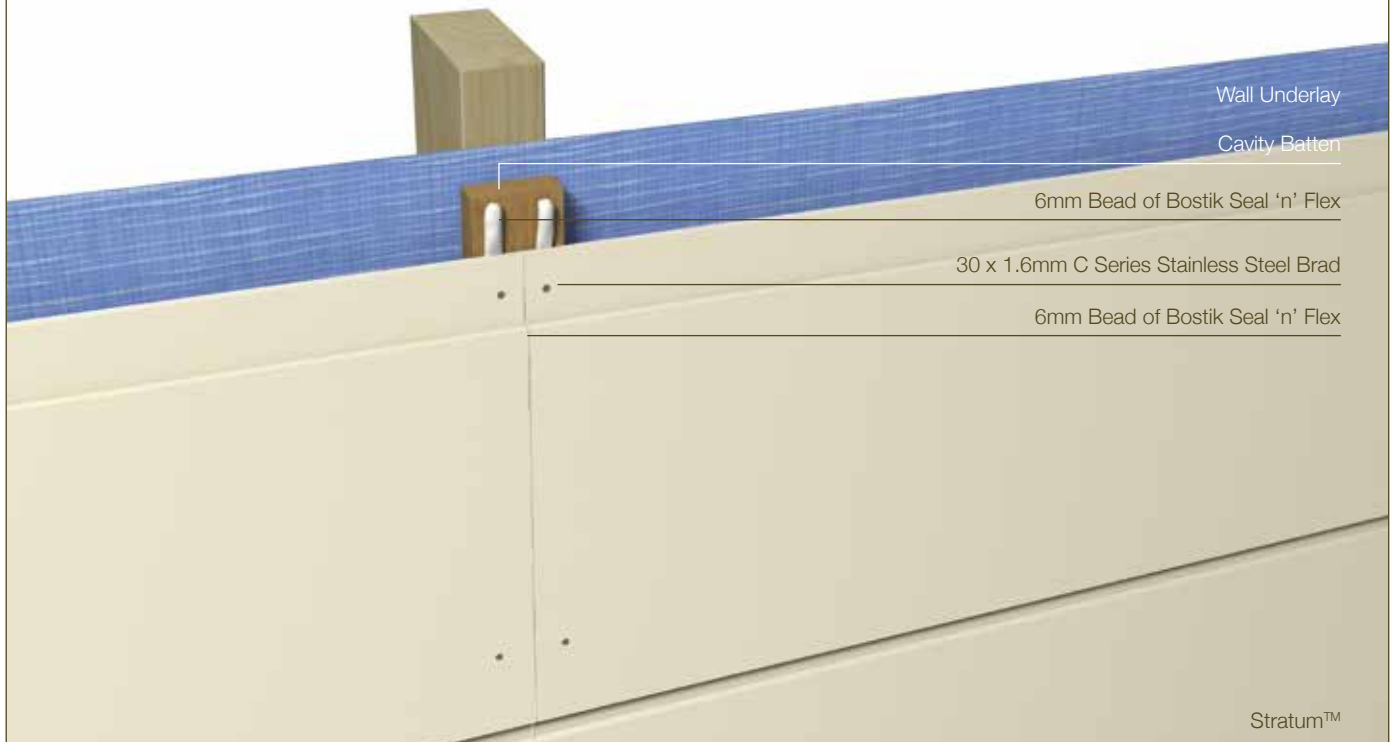
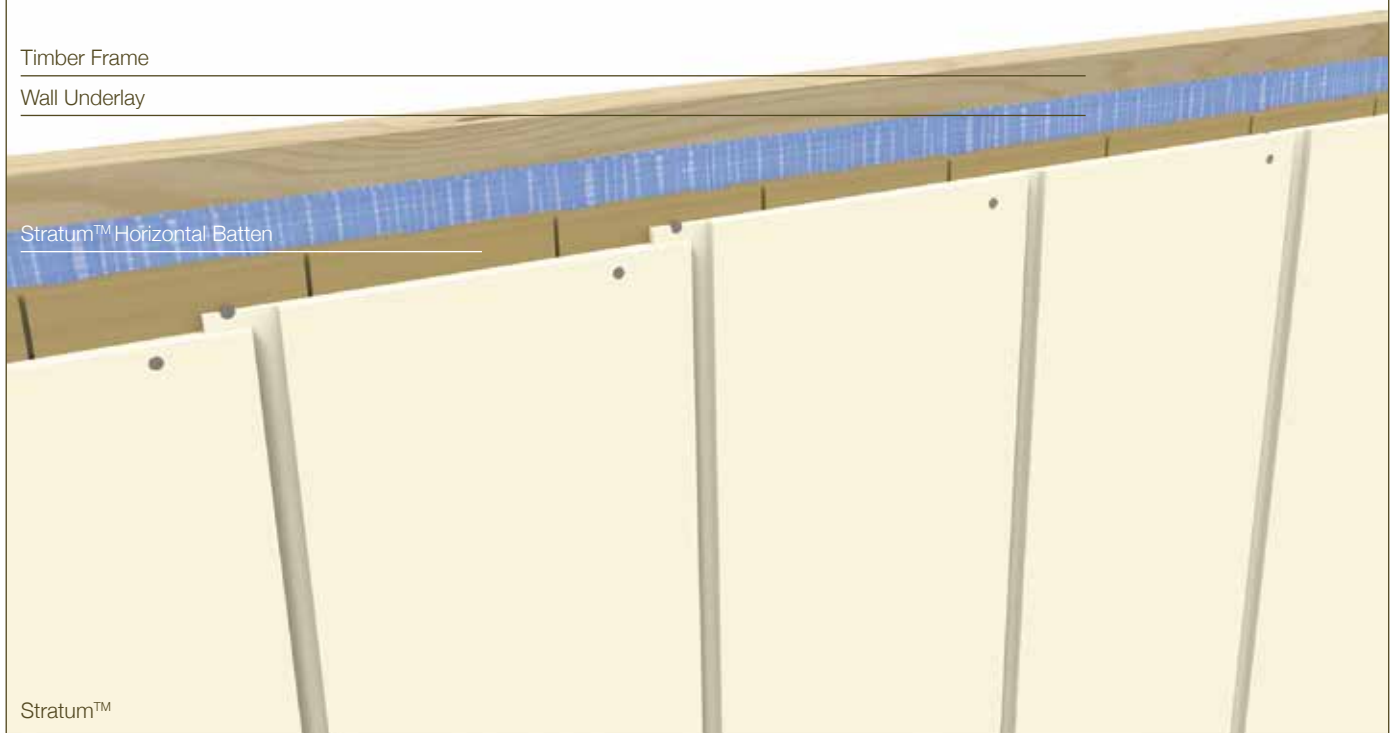


FIGURE 5
STRATUM™, STRATUM™ DUO, STRATUM™ TRIO –
VERTICAL INSTALLATION – PLANK JOINT



INSTALLATION DETAILS

FIGURE 6
STRATUM™, STRATUM™ DUO, STRATUM™ TRIO –
HORIZONTAL INSTALLATION – ON STUD JOINING

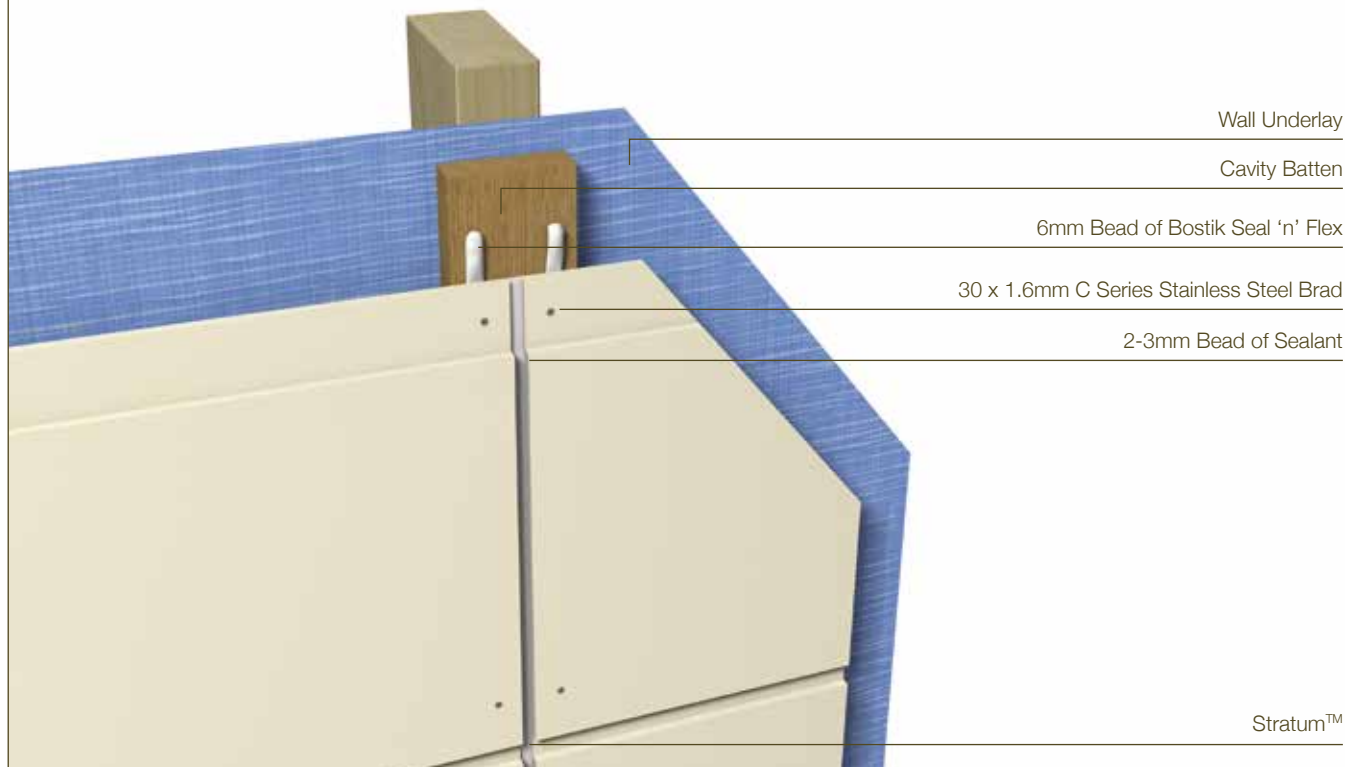


FIGURE 7
STRATUM™, STRATUM™ DUO, STRATUM™ TRIO –
VERTICAL INSTALLATION – PLANK JOINT

Timber Frame

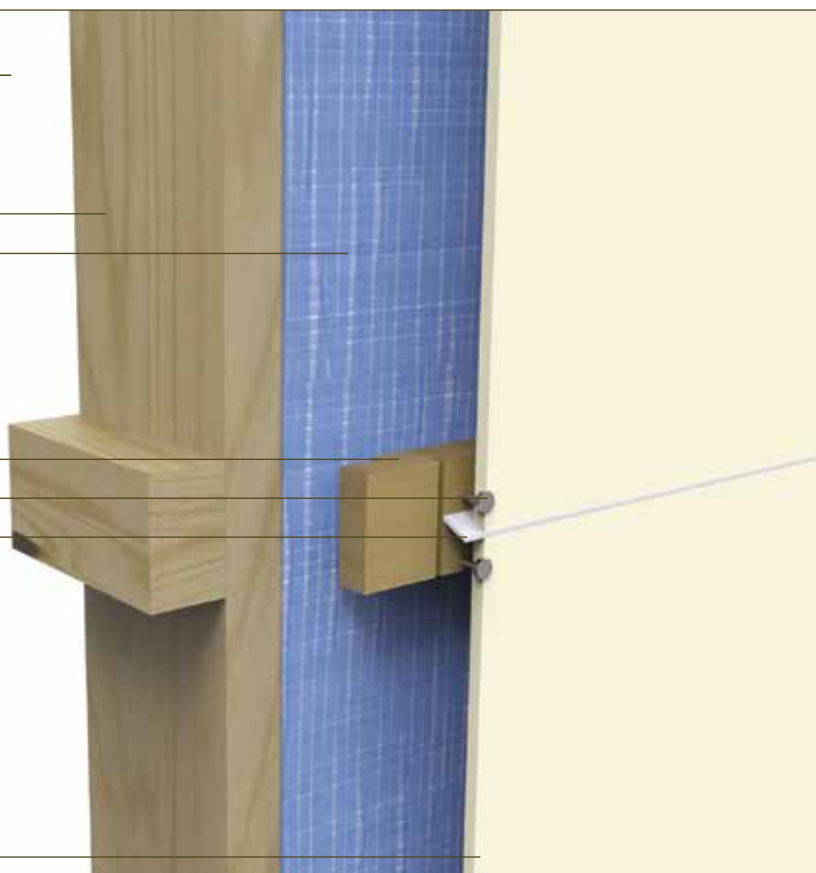
Wall Underlay

Stratum™ Horizontal Batten

Fastener

Sealant

Stratum™



INSTALLATION DETAILS

FIGURE 8
STRATUM™, STRATUM™ DUO, STRATUM™ TRIO –
HORIZONTAL INSTALLATION – FACE FIXING

6mm Bead of Bostik Seal 'n' Flex

30 x 1.6mm C Series Stainless Steel Brad

Cavity Batten

Wall Underlay

30 x 1.6mm C Series Stainless Steel Brad

Stratum™



FIGURE 9
STRATUM™, STRATUM™ DUO,
STRATUM™ TRIO –
VERTICAL INSTALLATION –
FACE FIXING

Timber Frame

Wall Underlay

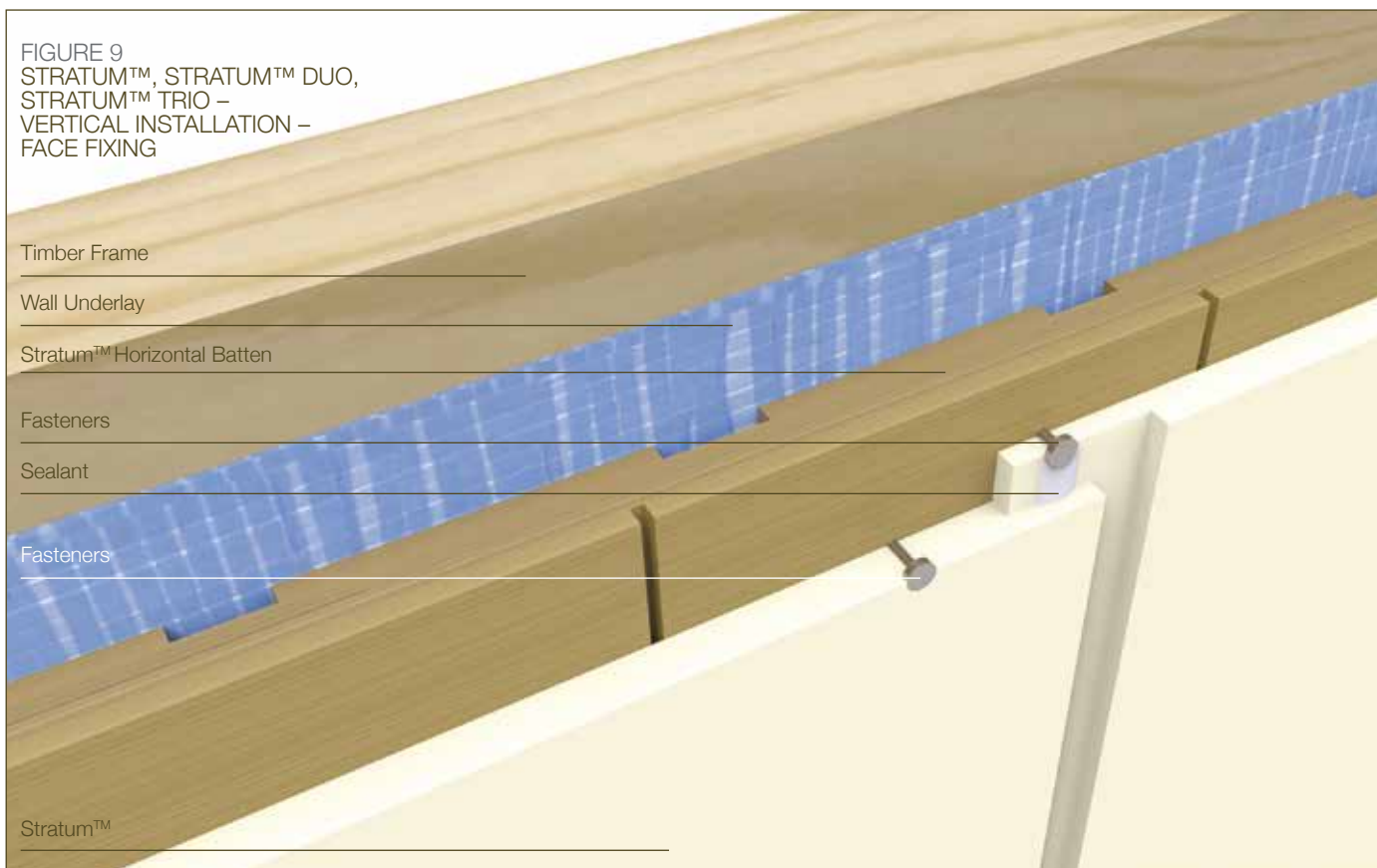
Stratum™ Horizontal Batten

Fasteners

Sealant

Fasteners

Stratum™



INSTALLATION DETAILS

FIGURE 10
STRATUM™, STRATUM™ DUO, STRATUM™ TRIO –
HORIZONTAL INSTALLATION – EXTERNAL CORNER

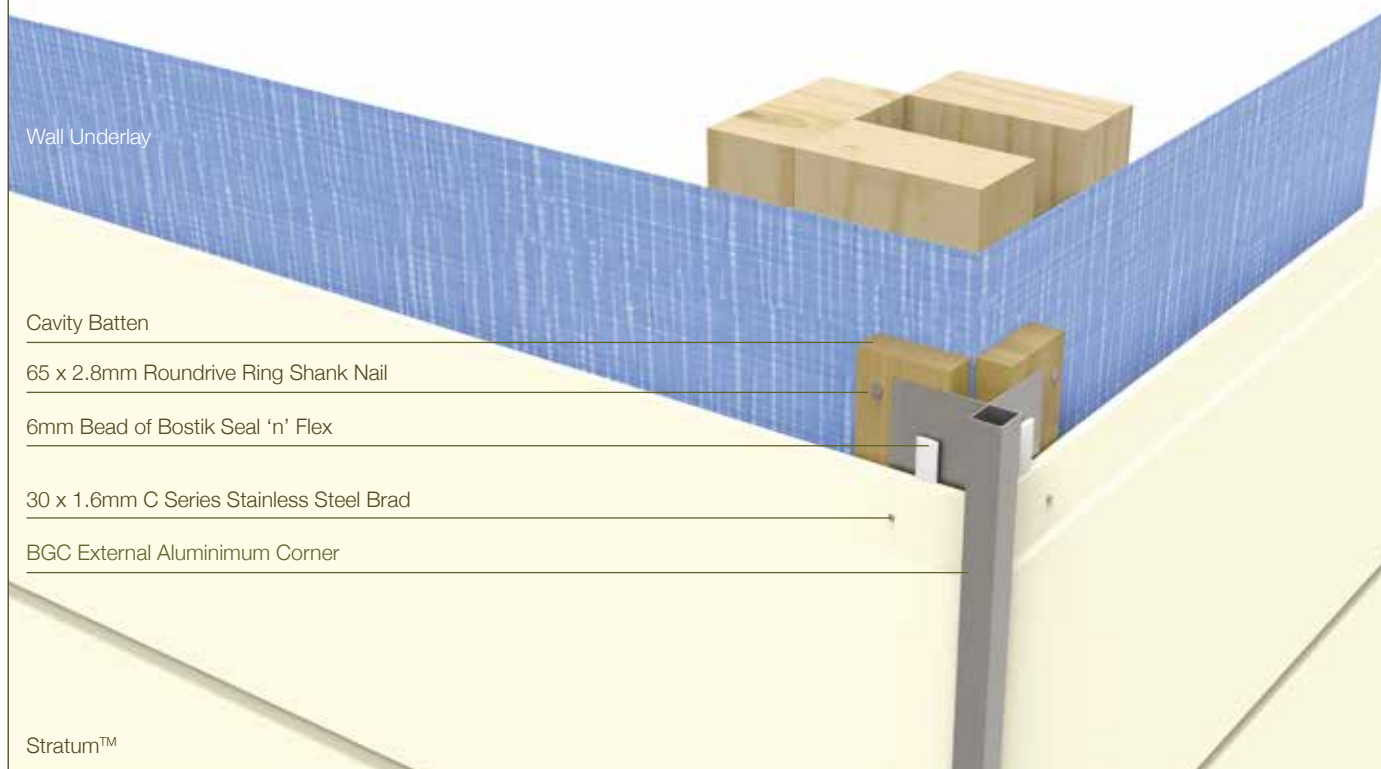
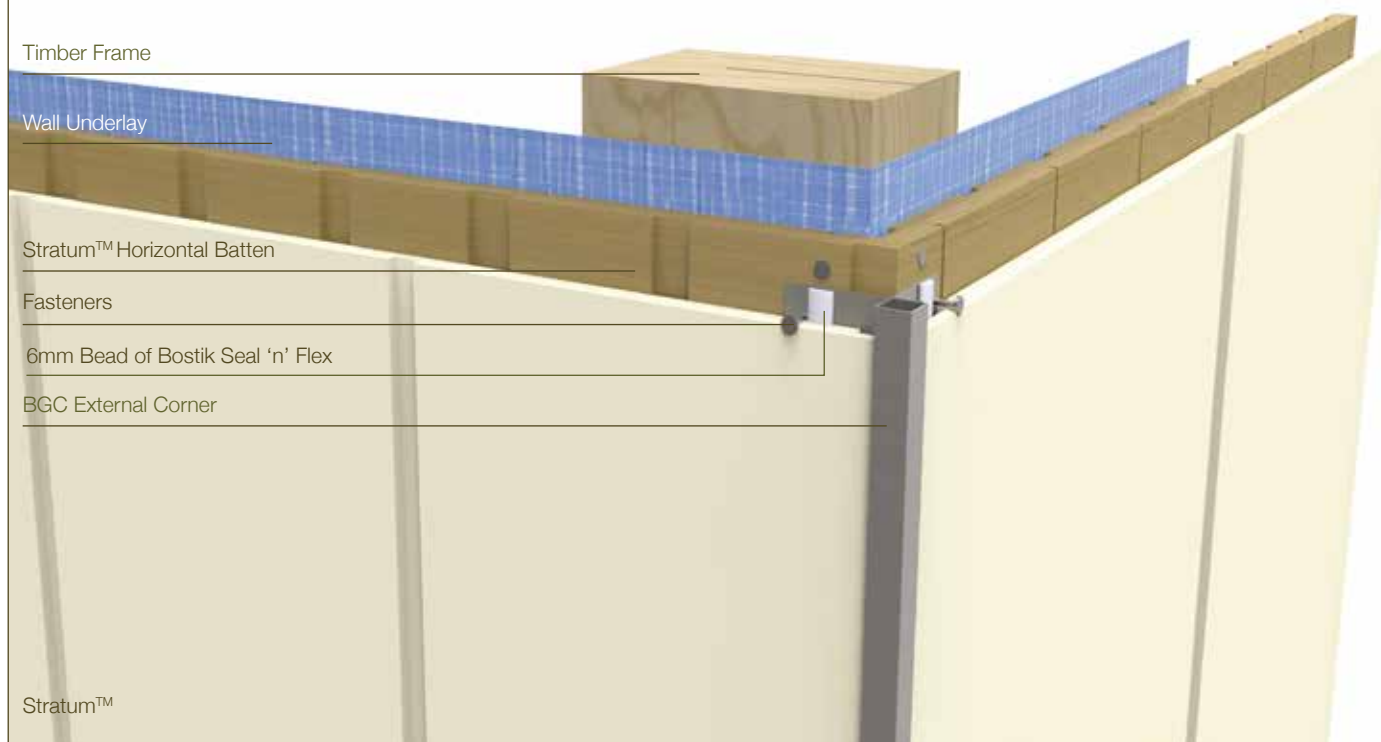


FIGURE 11
STRATUM™, STRATUM™ DUO, STRATUM™ TRIO –
VERTICAL INSTALLATION – EXTERNAL CORNER



INSTALLATION DETAILS

FIGURE 12
STRATUM™, STRATUM™ DUO,
STRATUM™ TRIO – HORIZONTAL
INSTALLATION – INTERNAL CORNER

Timber Frame

Cavity Batten

Sealant

BGC Internal Corner

Wall Underlay

Stratum™

FIGURE 13
STRATUM™, STRATUM™ DUO, STRATUM™ TRIO –
VERTICAL INSTALLATION – INTERNAL CORNER

Timber Frame

Sealant

BGC Internal Aluminium Corner

Wall Underlay

Stratum™ Horizontal Batten

Stratum™

INSTALLATION DETAILS

FIGURE 14
STRATUM™, STRATUM™ DUO, STRATUM™ TRIO –
HORIZONTAL INSTALLATION – WINDOW HEAD

Stratum™

Timber Frame

Cavity Batten

Wall Underlay

Cavity Vent Strip

Flashing Tape

Head Flashing



FIGURE 15
STRATUM™, STRATUM™ DUO, STRATUM™ TRIO –
VERTICAL INSTALLATION – WINDOW HEAD

Stratum™

Internal Lining

Wall Underlay

Timber Frame

Stratum™ Horizontal Batten

Flashing Tape

Head Flashing

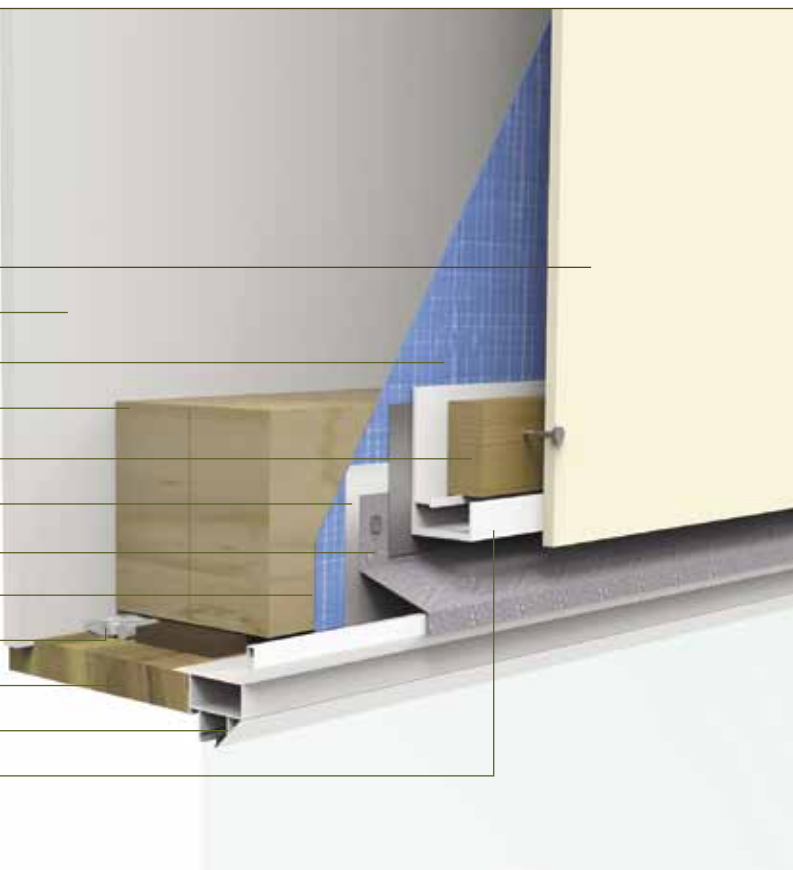
Flashing Tape

Airseal over Backing Rod

Head Liner

Window Joinery

Vent Strip



INSTALLATION DETAILS

FIGURE 16
STRATUM™, STRATUM™ DUO, STRATUM™ TRIO –
HORIZONTAL INSTALLATION – WINDOW SILL

Air Seal over Backing Rod

Timber Packer

Sill Support Bar

Foam Seal

Wall Underlay

Cavity Batten

30 x 1.6mm C Series Stainless Steel Brad

Stratum™

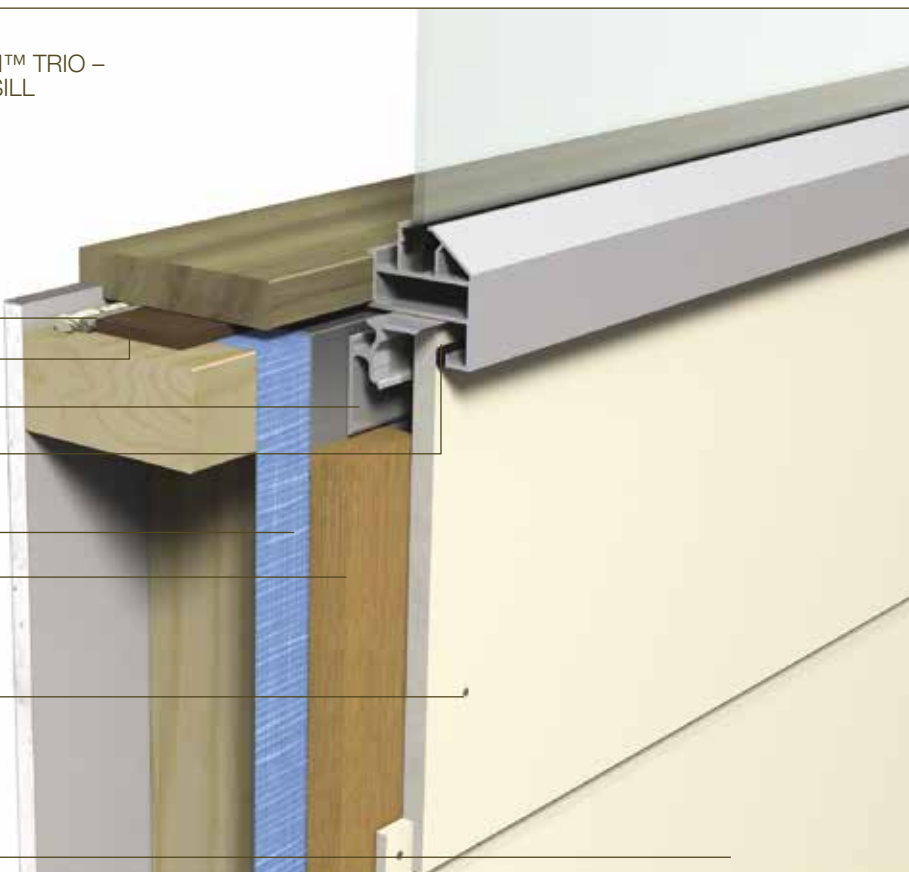


FIGURE 17
STRATUM™, STRATUM™ DUO, STRATUM™ TRIO –
VERTICAL INSTALLATION – WINDOW SILL

Window Joinery

Sill Liner

Timber Packer

Aireseal over Backing Rod

Flashing Tape

Sill Support Bar

Foam Seal

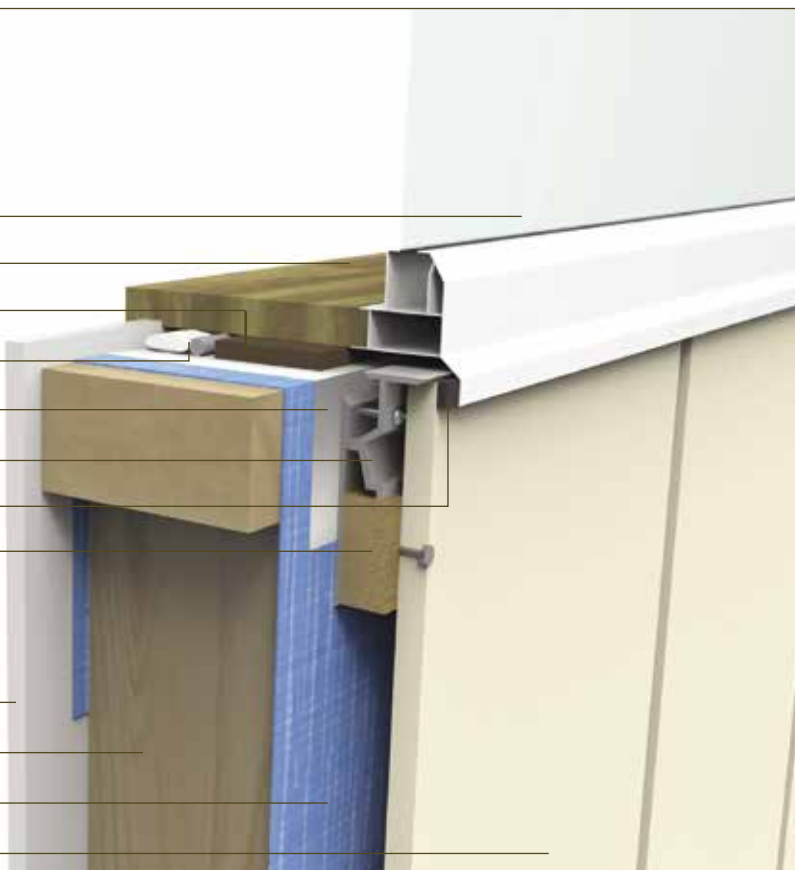
Stratum™ Horizontal Batten

Internal Lining

Timber Frame

Wall Underlay

Stratum™



INSTALLATION DETAILS

FIGURE 18
STRATUM™, STRATUM™ DUO, STRATUM™ TRIO –
HORIZONTAL INSTALLATION – WINDOW JAMB

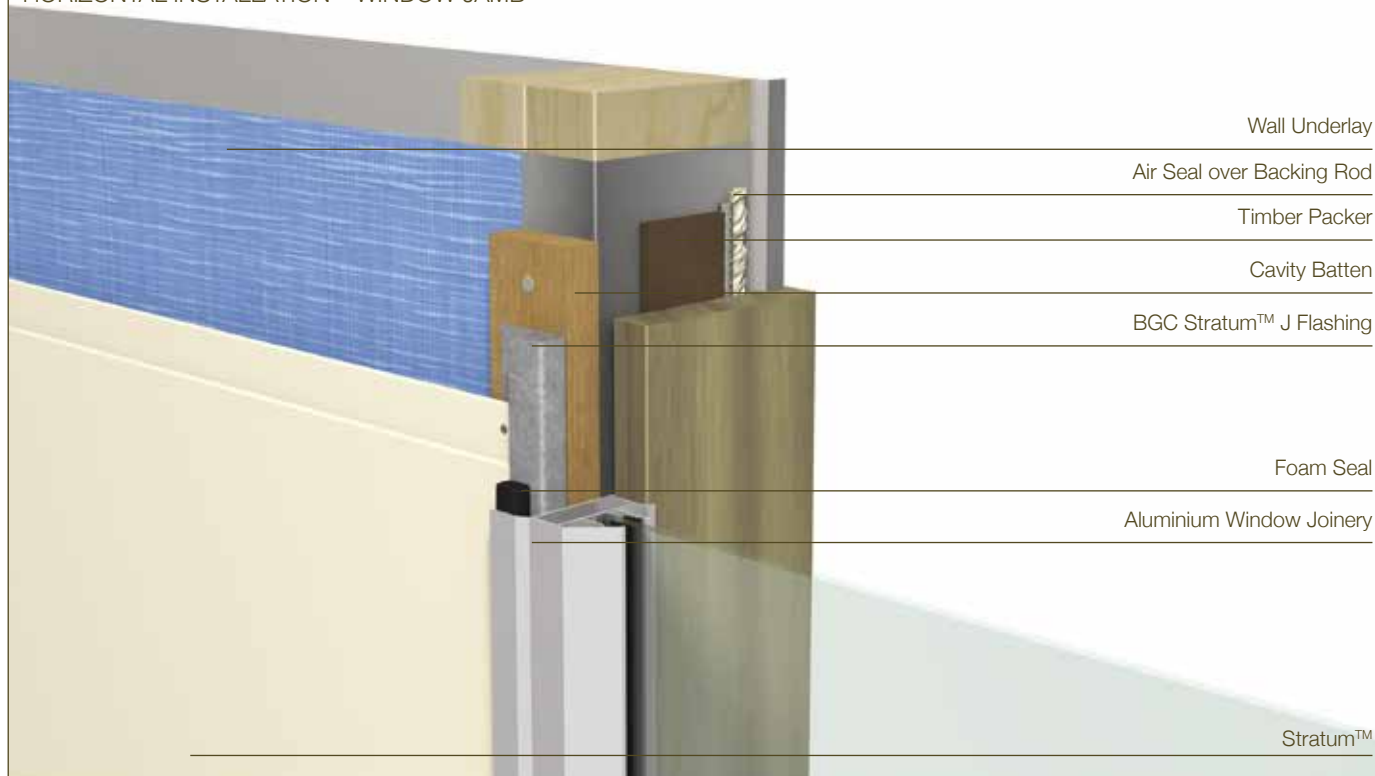
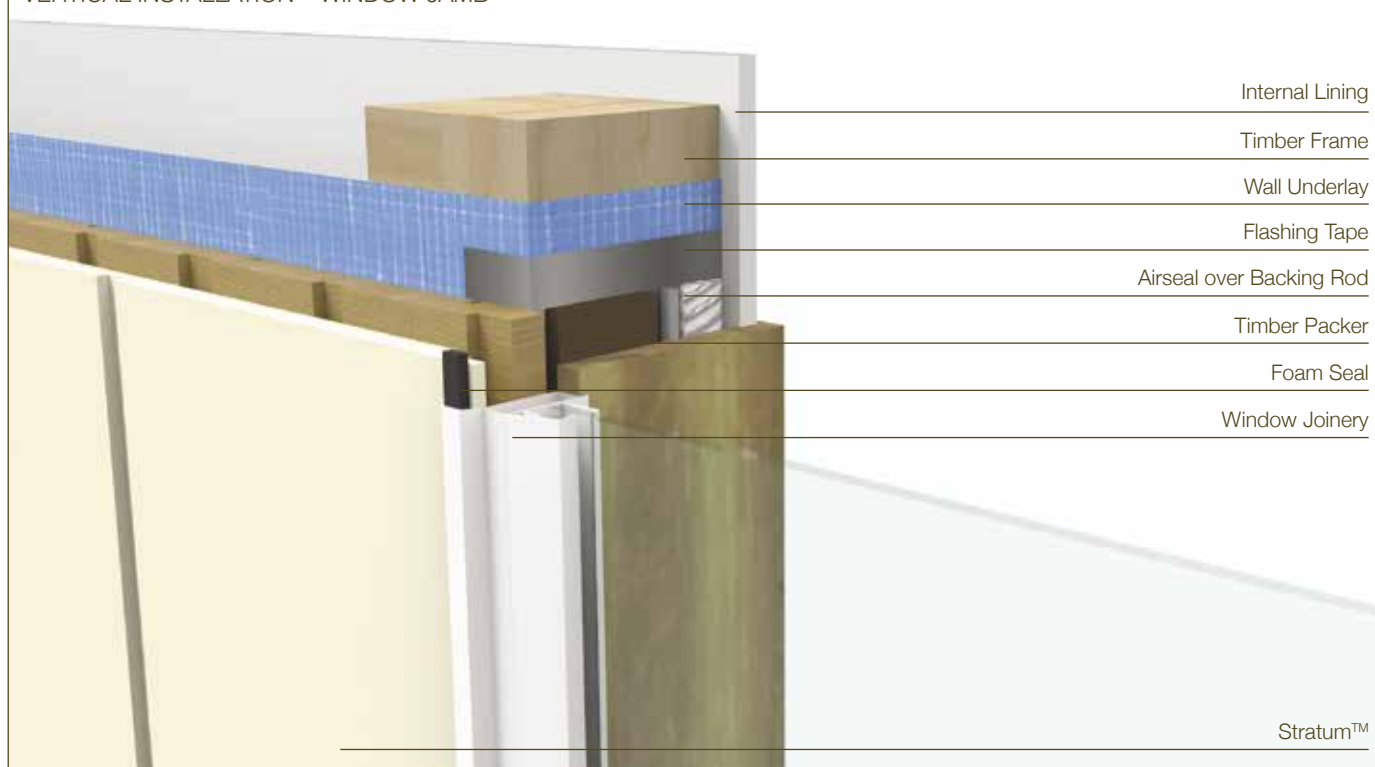


FIGURE 19
STRATUM™, STRATUM™ DUO, STRATUM™ TRIO –
VERTICAL INSTALLATION – WINDOW JAMB



STRATUM™ CONTOUR INSTALLATION DETAILS

FIGURE 20
STRATUM™ CONTOUR - ON STUD JOINING

Cavity Batten

40 x 2.8mm Fibre Cement Nail

Wall Underlay

Continuous Cant Strip or Profiled Packer

Stratum™ Contour

Stratum™ Contour Closer

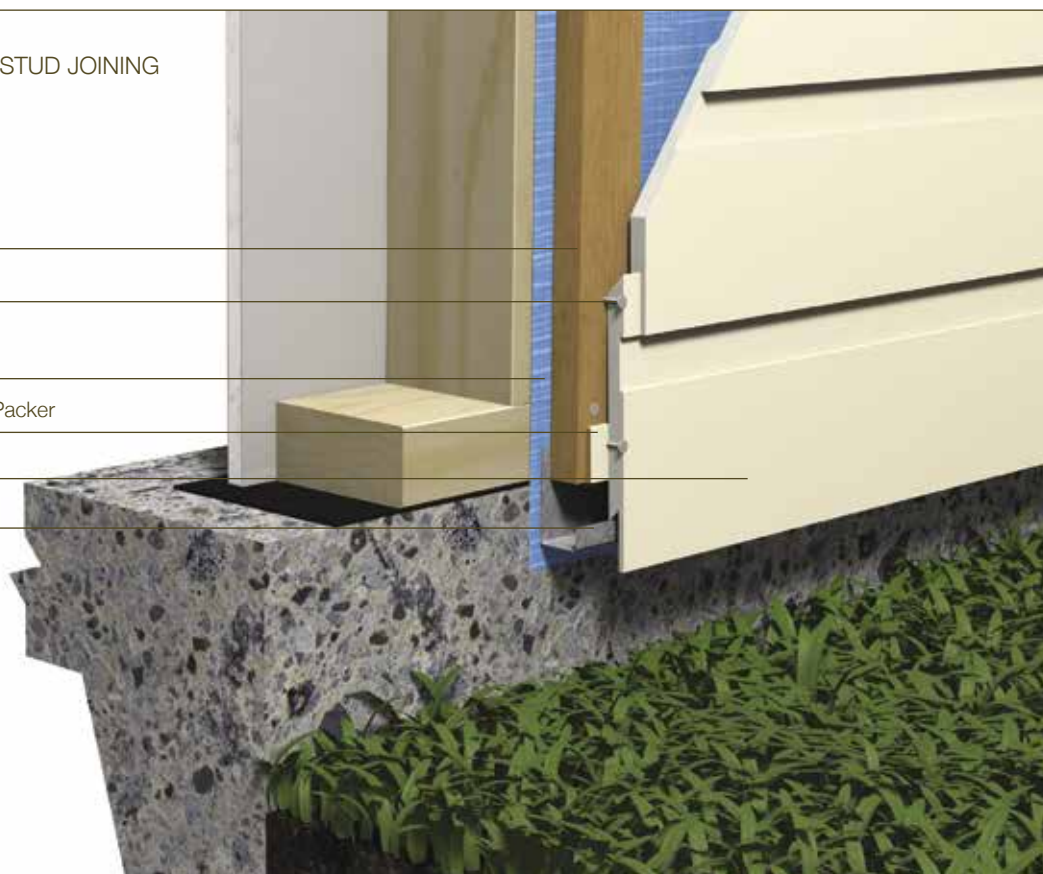


FIGURE 21
STRATUM™ CONTOUR - OFF STUD BUTTED JOINT

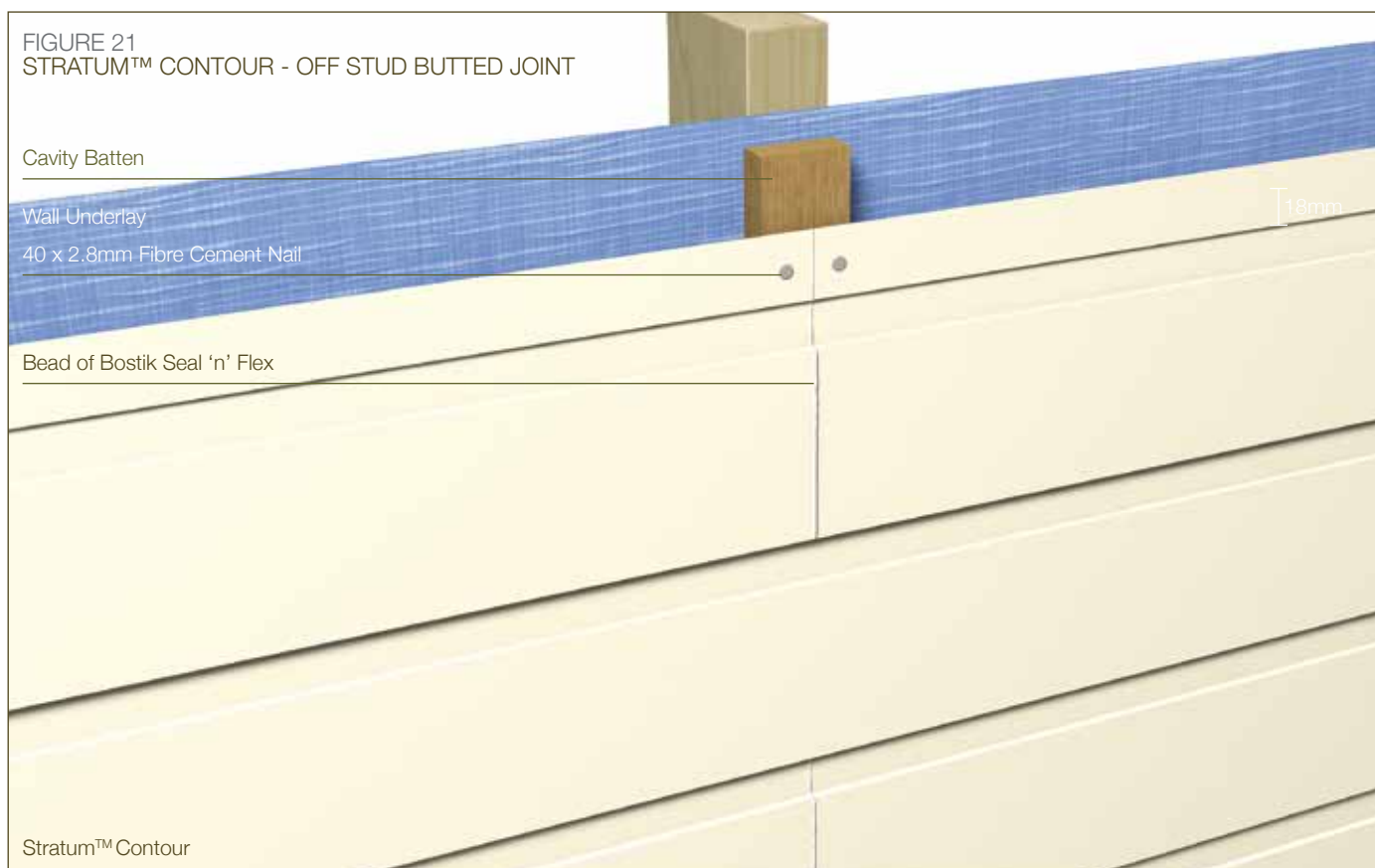
Cavity Batten

Wall Underlay

40 x 2.8mm Fibre Cement Nail

Bead of Bostik Seal 'n' Flex

Stratum™ Contour



INSTALLATION DETAILS

FIGURE 22
STRATUM™ CONTOUR CONCEALED FIXING

65 x 2.8mm Roundrive Ring Shank Nail

Cavity Batten

Wall Underlay

40 x 2.8mm Fibre Cement Nail

Stratum™ Contour



FIGURE 23
STRATUM™ CONTOUR -
ALUMINIUM BOX CORNER

Wall Underlay

Flashing (100mm wide each side)

65 x 2.8mm Roundrive Ring Shank Nail

Cavity Batten

40 x 2.8mm Fibre Cement Nail

BGC External Aluminium Corner

Stratum™ Contour



INSTALLATION DETAILS

FIGURE 24
STRATUM™ CONTOUR -
ALUMINIUM W INTERNAL CORNER

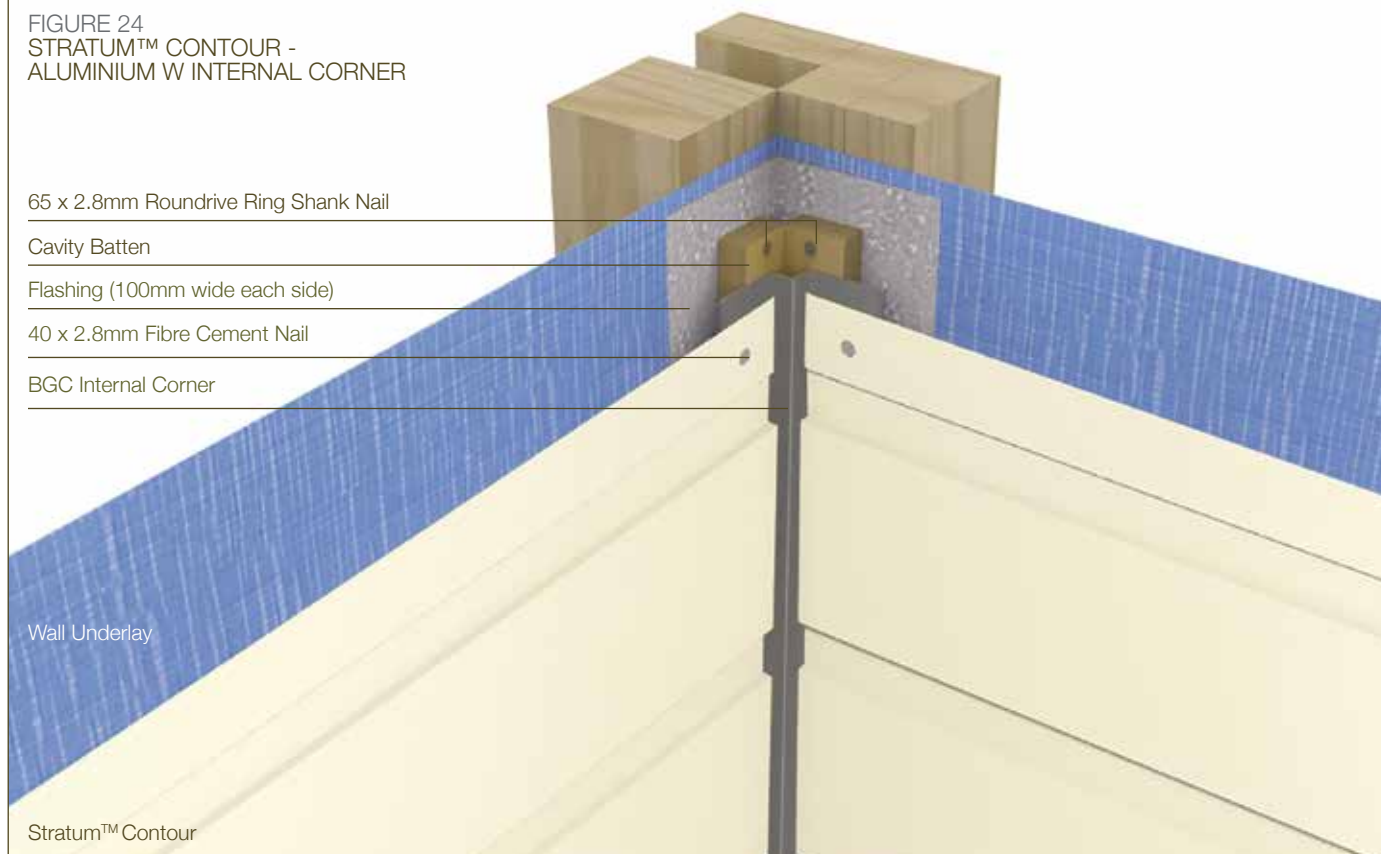
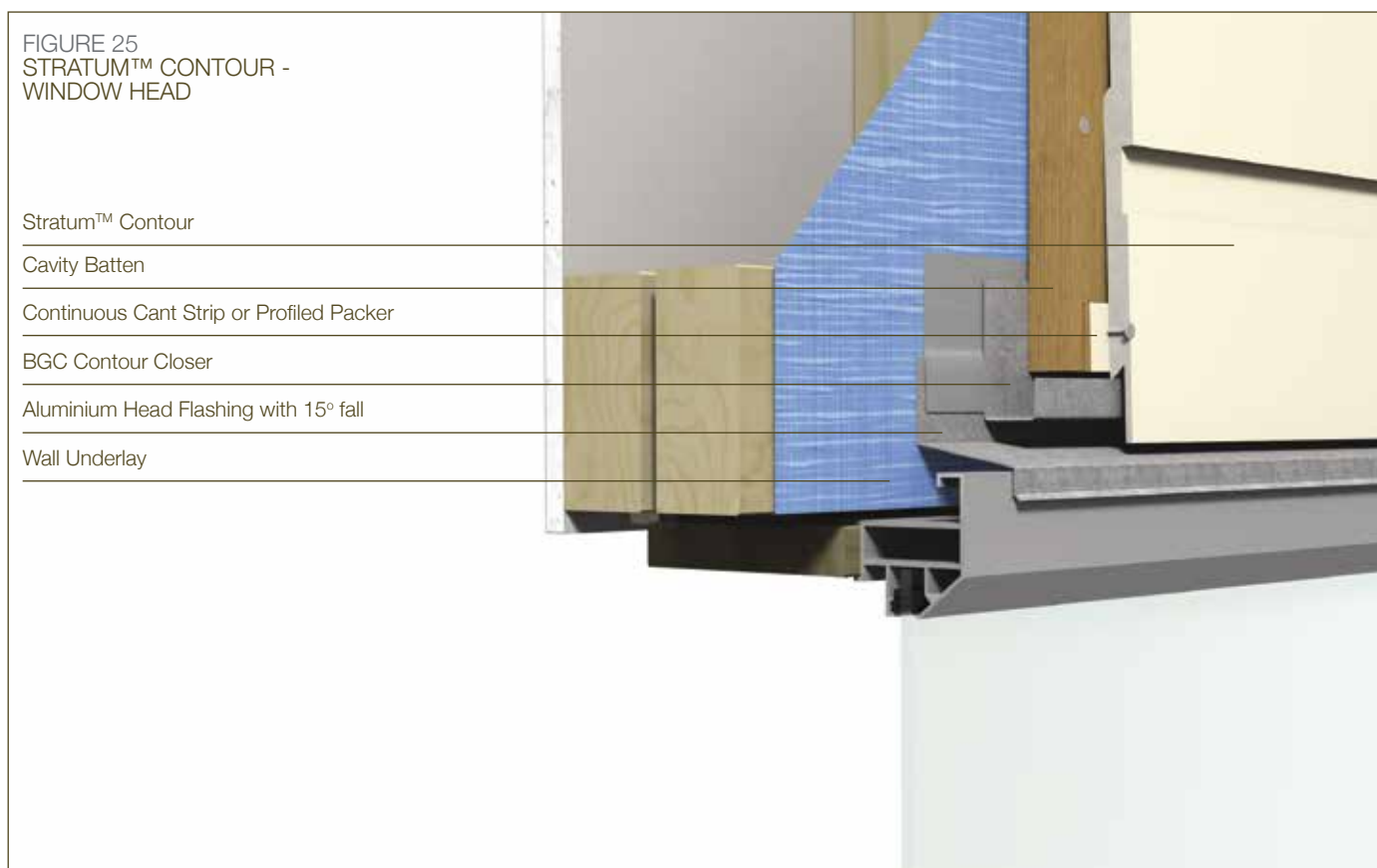


FIGURE 25
STRATUM™ CONTOUR -
WINDOW HEAD



INSTALLATION DETAILS

FIGURE 26
STRATUM™ CONTOUR - WINDOW SILL

Air Seal over Backing Rod

Timber Packer

Sill Support Bar

Wall Underlay

Cavity Batten

40 x 2.8mm Fibre Cement Nail

Stratum™ Contour



FIGURE 27
STRATUM™ CONTOUR - WINDOW JAMB

Wall Underlay

Air Seal over Backing Rod

Timber Packer

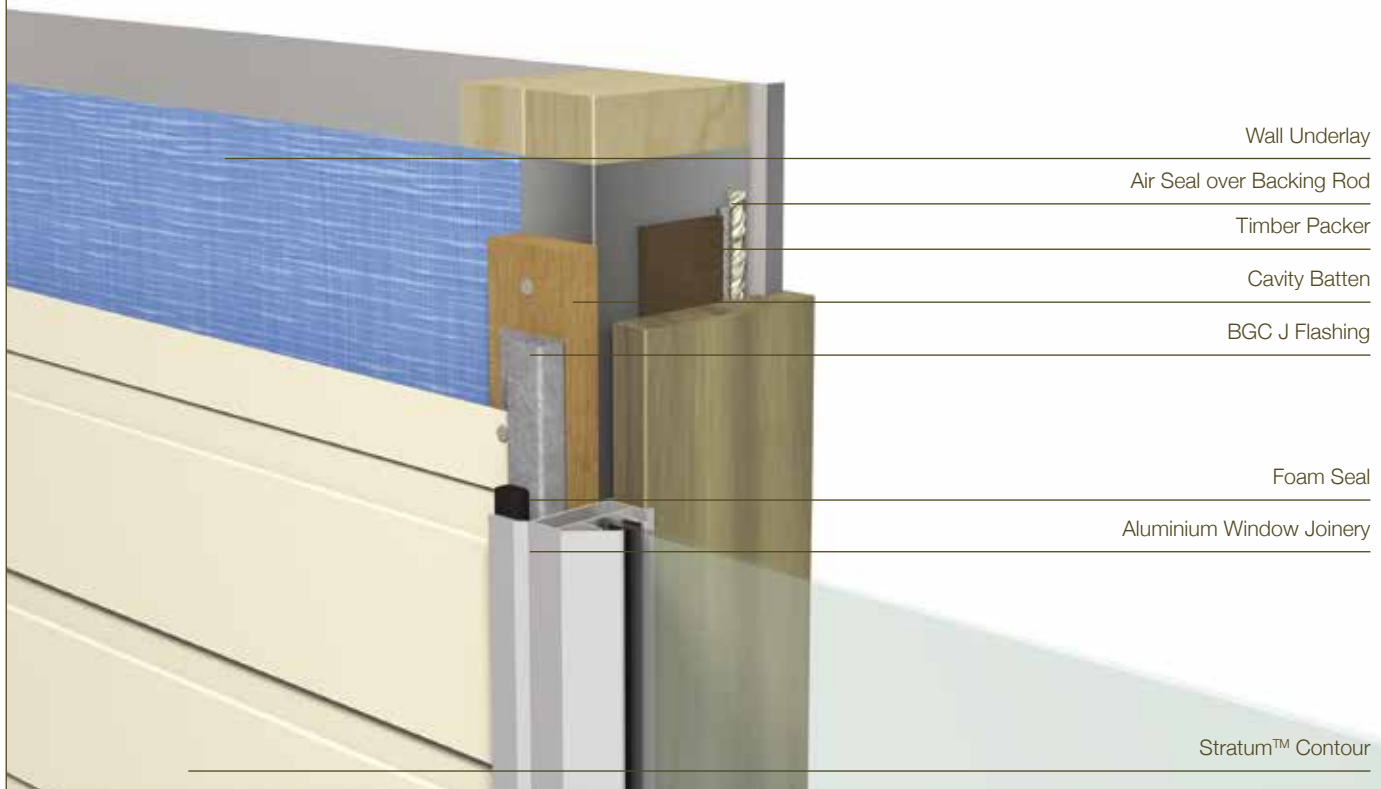
Cavity Batten

BGC J Flashing

Foam Seal

Aluminium Window Joinery

Stratum™ Contour



MOISTURE MANAGEMENT

Designers, specifiers and builders have a duty of care to identify moisture-associated risks with any individual building design.

Wall construction design should consider both the interior and exterior environments of the building to effectively manage moisture. Special consideration should be given to buildings that are in extreme climates or at higher risk of wind driven rain.

In addition, all wall openings, penetrations, junctions, connections, window heads, sills and jambs must incorporate appropriate flashing for waterproofing. All other components, materials and installation methods used to manage moisture in walls should comply with the relevant standards of the New Zealand Building Code.

FINISHING

Painting of Stratum™ is required to meet the durability and the external moisture management of the NZBC and BGC Warranty.

Stratum™ must be painted within 90 days of installation.

Stratum™ panels must be clean, dust free and dry before painting.

If the BGC Aluminium corner has been used, Stratum™ can be painted a dark colour.

Brad heads must be flush with the sheet surface and skimmed with a suitable exterior 2 part builder's filler. The skimmed area should be spot primed.

BGC recommends that Stratum™ is coated with a quality undercoat and minimum of two coats of high build acrylic paint. Refer to the paint manufacturer's recommendations for specific details.

MAINTENANCE

Building owners are responsible for the maintenance of Stratum™ cladding systems. The maintenance requirements should be determined by the specifier based on the location and exposure of the building.

It is recommended that

- / Regular cleaning at least annually of the paint finish with water and a mild detergent
- / Do not water blast
- / Inspect regularly and repair if required
- / Check ground clearances
- / Follow paint manufacturer's recommendations on recoating

WARRANTY

BGC (Aust) Pty Ltd trading as BGC Fibre Cement NZ warrants, subject to the Conditions and Notes set out below, that its products be:

- 1) Free from defects caused by defective materials or workmanship (manufacturer); and
- 2) Resistant to rotting, fire and cracking,

For the following period from the date of purchase of each product:

- 25 years for Nuline™ Plus, Stratum™ and Duraplank™ ranges
- 15 years for Montage™
- 50 years for DurabARRIER (when used as bracing sheets)
- 15 years for all other products.

If you purchase any BGC Fibre Cement (NZ) product and find that it does not meet the above warranty during the relevant warranty period, BGC Fibre Cement (NZ) will at its option, repair or replace the product, supply equivalent replacement products or reimburse the purchase price of the product, subject to receiving a valid claim, product inspection and confirmation of the existence of a defect by BGC Fibre Cement (NZ). We will bear the cost of any such repair, replacement or refund.

CONDITIONS

- i) This warranty is non-transferable. To claim under this warranty, you must submit proof of purchase and a written claim to BGC Fibre Cement (NZ) at the following address:

27 Accent Drive, East Tamaki, Auckland
Postal Address PO Box 76695, Manukau City, Auckland

- ii) The product must be installed and maintained in accordance with the relevant BGC Fibre Cement (NZ) literature current and available at the time of purchase. All additional products used in conjunction with the BGC Fibre Cement product(s), including accessories, jointing systems and coatings must be applied or installed according to the relevant manufacturer's instructions.
- iii) Claims must be submitted in writing within 30 days of the defect becoming reasonably apparent. If the defect is detected prior to installation, the claim must be submitted prior to installation.
- iv) Your sole remedy under this warranty is the repair or replacement of the product, supply of equivalent replacement product or reimbursement of the purchase price as described above. BGC Fibre Cement (NZ) is not liable for any damage or losses (direct or indirect) including (without limitation) any property damage or personal injury, economic loss or loss of profits, consequential loss arising in contract or negligence or howsoever arising.
- v) BGC Fibre Cement (NZ) is not liable for any claims, damages or defects arising from or attributed to:

- poor workmanship, poor design or detailing of the project,
- products not supplied by BGC Fibre Cement (NZ),
- settlement or structural movement or movement of materials to which the product is attached,
- incorrect design of the structure,
- acts of God, including but not limited to floods, cyclones, earthquakes or severe weather or unusual climate conditions,
- performance of coatings or paints applied to the product,
- normal wear and tear, growth of mould, mildew, fungi, bacteria or any other organism on the product's surface (exposed or unexposed).

Failure to comply with all relevant requirements of the current New Zealand Building Code regulations and standards in the design and construction of the project.

Please note that:

- If any remedy under this warranty involves recoating or painting of BGC Fibre Cement (NZ) products, there may be slight colour differences between the replacement product and the original products due to the effect weathering and variations in materials over time.
- BGC Fibre Cement (NZ) does not warrant any product's suitability for any purpose or ability to comply with the relevant conditions set out in the New Zealand Building Code. It is the responsibility of the building designer to ensure that the products used are suitable for the intended project and that specific design is conducted where appropriate. All warranties, conditions, liabilities and obligations other than those specified in this warranty are excluded to the fullest extent allowed by the law.
- The instructions and recommendations in BGC Fibre Cement (NZ) literature are based on good building practice, but are in no way an exhaustive statement of all relevant information and are subject to conditions above. BGC Fibre Cement has tested the performance of its products when installed in accordance with the product's technical specification, in accordance with the standards required by the New Zealand Building Code.

DISCLAIMER

The successful performance of the relevant product depends on a number of factors outside the control of BGC Fibre Cement (NZ). As such, BGC Fibre Cement (NZ) shall not be liable for the recommendations made in its literature and the performance of the products/systems including its suitability for any purpose or ability to comply with the relevant conditions set out in the New Zealand Building Code. It is the responsibility of the building designer to ensure that the details and recommendations provided in the relevant BGC Fibre Cement (NZ) installation guide are suitable for the intended project and that specific design is conducted where appropriate.

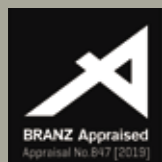
The instructions and recommendations in BGC Fibre Cement (NZ) literature are based on good building practice, but are in no way an exhaustive statement of all relevant information and are subject to conditions above. BGC Fibre Cement has tested the performance of its products when installed in accordance with the product's technical specification, in accordance with the standards required by the New Zealand Building Code. Those test results demonstrate the products compliance with the performance criteria set out by the New Zealand Building Code.

CONTACT

BGC FIBRE CEMENT
PO BOX 76695
MANUKAU CITY 2241

TELEPHONE / 09 273 1457
FREE PHONE / 0800 424234
FACSIMILE / 09 273 1461

WWW.BGCINNOVADESIGN.CO.NZ



BGC HAS A TEAM OF TECHNICAL SPECIALISTS WHO CAN ASSIST WITH ALL SPECIFICATION AND DESIGN INFORMATION. BGC PROVIDES BUILDERS, DEVELOPERS AND ARCHITECTS WITH A RANGE OF DESIGN ALTERNATIVES AND INNOVATIVE PRODUCTS SUCH AS:

DURASHEET™ / Fibre cement sheet for exterior applications.

DURATEX™ / Fibre cement sheets for applied finish systems.

DURABACKER™ / Fibre cement sheet for high build plaster coatings.

DURABARRIER / A rigid sheathing/air barrier for all types of timber framed construction.

DURAPLANK™ / Woodgrain and smooth fibre cement plank for exterior applications.

DURAGRID™ / A lightweight facade giving a modern and durable finish.

DURAGROOVE™ / A vertically grooved cladding.

DURASCAPE™ / A base sheet with a 5mm shiplap join.

DURALINER™ / Interior lining suitable as a substrate for tiles and is ideal for wet areas.

NULINE™PLUS / Weatherboard cladding system.

DURACOM GREYSTONE™ / A pre-finished facade system.

MONTAGE™ / A pre-finished versatile facade system that can be used internally and externally.

STONESHEET™ / Fibre cement stone slip substrate.

SAFE WORKING PRACTICES - PLEASE WEAR A P1 OR P2 MASK AND SAFETY GOGGLES (APPROVED TO AS/NZW1337 STANDARDS) WHILST CUTTING OR INSTALLING DURAGRID™. DURAGRID™ CAN BE SAFELY HANDLED DURING UNLOADING OR STACKING WITHOUT THE USE OF THESE PRECAUTIONS.

CLEANING UP - ALWAYS WET DOWN YOUR WORK AREA WHEN CUTTING DURAGRID™, TO ENSURE THAT DUST IS MANAGED. DISPOSE OF ANY VACUUMED DUST WITH CARE AND USING CONTAINMENT PROCEDURES.